

Providence R.I.
This plat accompanies
our report of this date.

PLAT OF ALLEN'S AVENUE

FROM CRARY ST. TO DIVISION AVE.

IN 6 SHEETS

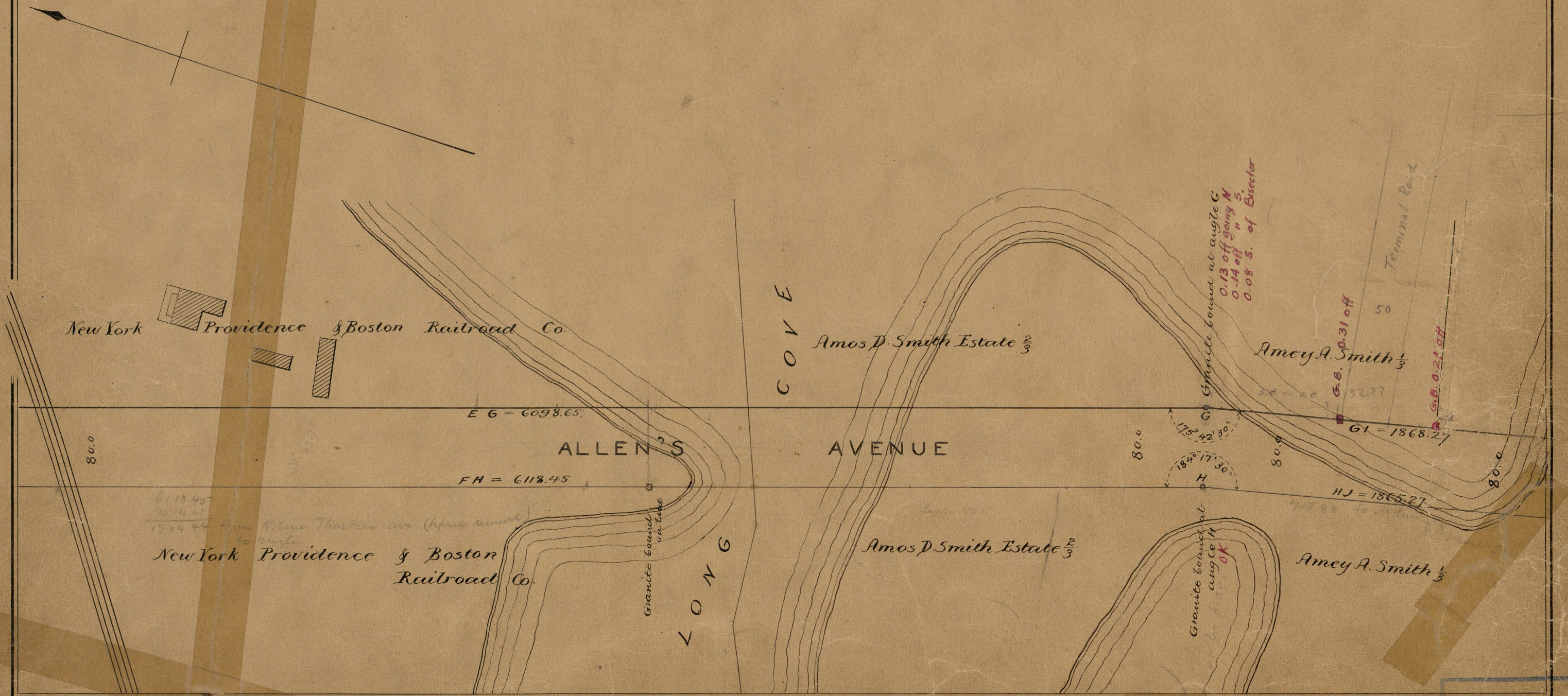
SCALE 100 FEET PER INCH.

PROVIDENCE, R. I.
CITY ENGINEER'S OFFICE
STREET LINE DEPT.

Feb. 25 1888

013584

Red Notes F.B. $\frac{2483}{131}$



6118.45
52 18 01
17 04 44 from Stone Thorton ave (after removal)
to angle

Granite bound at angle C
0.13 off going N
0.14 off " S
0.08 S. of Bisector

G.B. 0.31 off
3277

P.G.B. 0.21 off

83
A-76

OFFICE NO. 9478
DRAWER 83
SHEET A-76